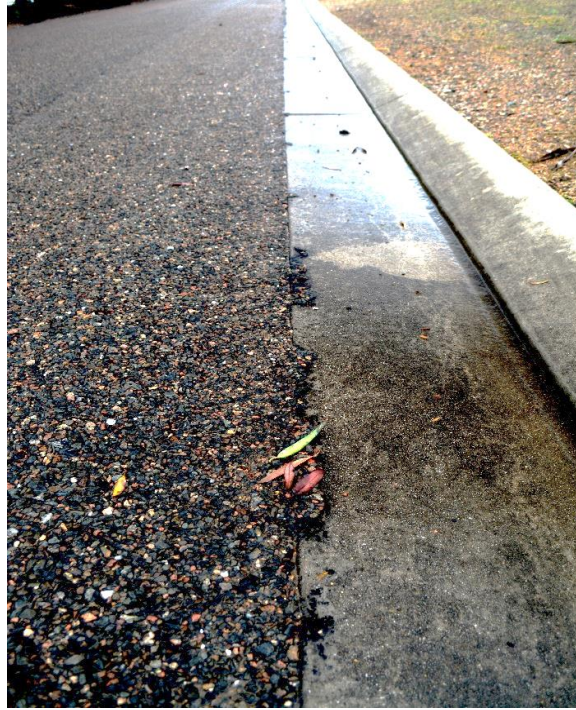


"LIFE THROUGH THE LENS"



STRENGTH FROM ALONGSIDE

Some time ago, I wrote about a road edge which was once new; bright; shiny. It proudly gloated and said to the dirt alongside "I am a new, bright, shiny road!" But time, weathering, pressure, cracking had all taken a toll, and in places, that same road now relies on the "dirt" to help slow the breaking up of the road.

Just around the corner, is another road; laid down about the same time as the first road. But there is a difference! The side of this road is not cracked and chipped. Although weathered with age, the edge remains strong; clearly defined. The difference? The material of this road is bedded firmly against something much stronger and more durable than itself. The road sits against material with the strength to take the weight of traffic and shaped, so degenerating water runs off. This edge looks like it will stand the pressures of time.

It is so easy to gloatingly judge those around with thoughts of, "I am much better than....." "I don't do the things that....."

However, a day may come when life runs over us; temptations seep into cracks and starts to cause "who I am" to crumble. That is when we need someone more reliable; someone history tells us has stood and stayed true against all pressure; someone we can trust to share **his** strength with us, make us stronger when under pressure, and offer a life that is not broken and crumbling.

Consider Jesus of the Bible who stood against hypocrisy, abuse, false praise, and was even stronger than a grave. After talking about people being torn down, under pressure, He made this offer and promise, "I came so they can have real and eternal life, more and better life than they ever dreamed of." John 10:10.

Do you feel your life is crumbling, being worn down? Tell Jesus about it and trust his promises to help and strengthen and walk alongside.

Cheers and God bless,
Kevin.